



## Rhode Island Department of Environmental Management

235 Promenade Street | Providence, RI 02908 | 401.222.4700 | [www.dem.ri.gov](http://www.dem.ri.gov) | @RhodeIslandDEM

### FOR IMMEDIATE RELEASE:

Saturday, July 27, 2019

CONTACT: Mike Healey, DEM: 401-258-0787

[Michael.Healey@dem.ri.gov](mailto:Michael.Healey@dem.ri.gov)

Annemarie Beardsworth: 401-641-8726

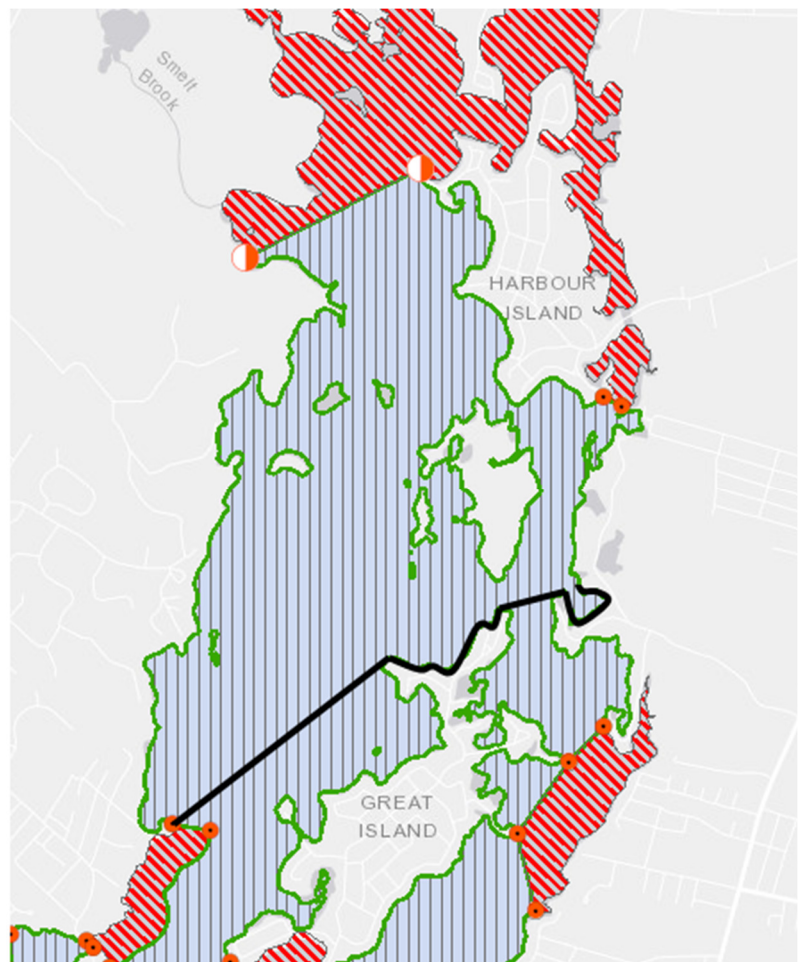
[A.Beardsworth@health.ri.gov](mailto:A.Beardsworth@health.ri.gov)

## DEM, RIDOH ANNOUNCE IMMEDIATE PARTIAL CLOSURE OF POINT JUDITH POND TO SHELLFISHING DUE TO HIGH BACTERIAL COUNT

*The agencies also advise that any shellfish harvested from the closed area of the pond – either commercially or recreationally – since Tuesday, July 23, be thrown away.*

PROVIDENCE – The Department of Environmental Management (DEM) and Rhode Island Department of Health (RIDOH) are announcing that effective immediately and until further notice, all waters of Point Judith Pond located north of a line from the eastern tip of High Point in South Kingstown to Thomas Point on Great Island and north of a line from Horseshoe Point, Great Island, to the northern tip of Locke Point in Narragansett are closed to shellfishing. The closure includes all the waters of Wolcott Cove.

The agencies are enacting the closure because water samples collected on Thursday July 25, had unsafe bacteria levels. The results of these samples were received today. The high bacteria levels are likely due to stormwater runoff from the more than three inches of rain that fell on Monday, July 22, and Tuesday, July 23, across the state. RIDOH has initiated a recall of shellfish commercially harvested (wild or farmed) from Point Judith Pond on or after Tuesday and is advising that any



*This is a map of Point Judith Pond. All waters north of the bold, black line are closed to shellfishing effective immediately.*

shellfish harvested from the closed area of the pond, either commercially or recreationally, since Tuesday be thrown away immediately.

Shellfish from water with high bacteria levels could result in gastroenteritis, RIDOH advises. The symptoms of gastroenteritis could include nausea, vomiting, stomachache, diarrhea, headache, and fever. It can be a serious health concern for young children, the elderly, and people with compromised immune systems.

DEM will update this announcement once additional water samples are collected and tested.

Shellfish commercially harvested from Potter Pond and the open areas of Point Judith Pond should be identified as harvested from tagging area 6PSW until further notice.

Follow DEM on Twitter ([@RhodeIslandDEM](https://twitter.com/RhodeIslandDEM)) or [Facebook](#) and follow RIDOH on Twitter ([@RIHEALTH](https://twitter.com/RIHEALTH)) or [Facebook](#) for information and timely updates.

**###**



## Rhode Island Department of Environmental Management

235 Promenade Street | Providence, RI 02908 | 401.222.4700 | [www.dem.ri.gov](http://www.dem.ri.gov) | @RhodeIslandDEM

### FOR IMMEDIATE RELEASE:

Saturday, July 27, 2019

CONTACT: Mike Healey, DEM: 401-258-0787

[Michael.Healey@dem.ri.gov](mailto:Michael.Healey@dem.ri.gov)

Annemarie Beardsworth: 401-641-8726

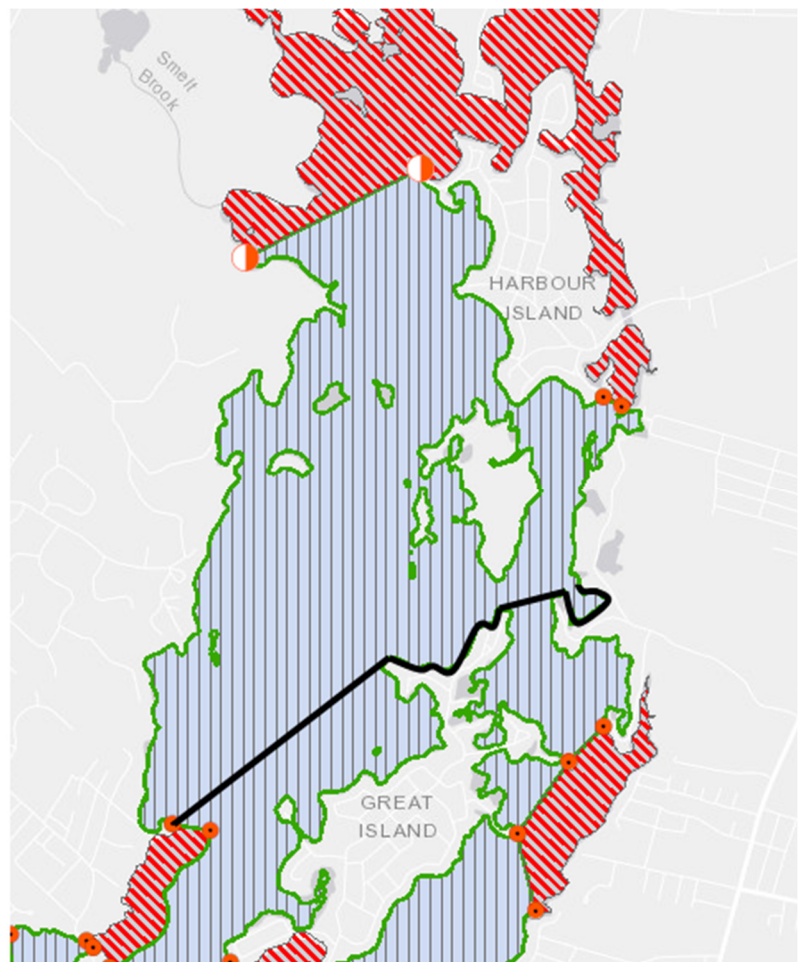
[A.Beardsworth@health.ri.gov](mailto:A.Beardsworth@health.ri.gov)

## DEM, RIDOH ANNOUNCE IMMEDIATE PARTIAL CLOSURE OF POINT JUDITH POND TO SHELLFISHING DUE TO HIGH BACTERIAL COUNT

*The agencies also advise that any shellfish harvested from the closed area of the pond – either commercially or recreationally – since Tuesday, July 23, be thrown away.*

PROVIDENCE – The Department of Environmental Management (DEM) and Rhode Island Department of Health (RIDOH) are announcing that effective immediately and until further notice, all waters of Point Judith Pond located north of a line from the eastern tip of High Point in South Kingstown to Thomas Point on Great Island and north of a line from Horseshoe Point, Great Island, to the northern tip of Locke Point in Narragansett are closed to shellfishing. The closure includes all the waters of Wolcott Cove.

The agencies are enacting the closure because water samples collected on Thursday July 25, had unsafe bacteria levels. The results of these samples were received today. The high bacteria levels are likely due to stormwater runoff from the more than three inches of rain that fell on Monday, July 22, and Tuesday, July 23, across the state. RIDOH has initiated a recall of shellfish commercially harvested (wild or farmed) from Point Judith Pond on or after Tuesday and is advising that any



*This is a map of Point Judith Pond. All waters north of the bold, black line are closed to shellfishing effective immediately.*

shellfish harvested from the closed area of the pond, either commercially or recreationally, since Tuesday be thrown away immediately.

Shellfish from water with high bacteria levels could result in gastroenteritis, RIDOH advises. The symptoms of gastroenteritis could include nausea, vomiting, stomachache, diarrhea, headache, and fever. It can be a serious health concern for young children, the elderly, and people with compromised immune systems.

DEM will update this announcement once additional water samples are collected and tested.

Shellfish commercially harvested from Potter Pond and the open areas of Point Judith Pond should be identified as harvested from tagging area 6PSW until further notice.

Follow DEM on Twitter ([@RhodeIslandDEM](https://twitter.com/RhodeIslandDEM)) or [Facebook](#) and follow RIDOH on Twitter ([@RIHEALTH](https://twitter.com/RIHEALTH)) or [Facebook](#) for information and timely updates.

**###**



## Rhode Island Department of Environmental Management

235 Promenade Street | Providence, RI 02908 | 401.222.4700 | [www.dem.ri.gov](http://www.dem.ri.gov) | @RhodeIslandDEM

### FOR IMMEDIATE RELEASE:

Tuesday, July 31, 2019

**CONTACT:** Mike Healey, DEM: 401-258-0787

[Michael.Healey@dem.ri.gov](mailto:Michael.Healey@dem.ri.gov)

Joseph Wendelken, RIDOH: 401-222-3998

[Joseph.Wendelken@health.ri.gov](mailto:Joseph.Wendelken@health.ri.gov)

## DEM, RIDOH ANNOUNCE REOPENING OF WINNAPaug AND POINT JUDITH PONDS TO SHELLFISHING

*Unsafe bacterial counts forced the closure of Winnapaug Pond on July 26 and Point Judith Pond on July 27. These waters are now safe for the harvesting of shellfish and will reopen at sunrise tomorrow, August 1.*

PROVIDENCE – The Department of Environmental Management (DEM) and Rhode Island Department of Health (RIDOH) are announcing that all waters of Winnapaug Pond in Westerly and waters of Point Judith Pond in Narragansett and South Kingstown that were affected by last week's emergency closure will reopen to shellfishing at sunrise tomorrow, August 1.

The agencies enacted the closures because water samples collected last week had unsafe bacteria levels, likely caused by stormwater runoff from the more than three inches of rain that fell on July 22 and 23 in southern Rhode Island. RIDOH initiated a recall of shellfish harvested either commercially or recreationally in both waterbodies since July 23.

On July 29, DEM collected water samples to test for fecal coliform bacteria in response to the emergency closures. Results completed this afternoon from RIDOH's laboratory analysis indicated that these waters are now suitable for the harvesting of shellfish. Commercial harvesters may resume shellfishing using the 6P tagging designation for Point Judith Pond, and aquaculturists may resume normal operations of their leases.

Shellfishing remains restricted in the waters of Winnapaug Pond and Point Judith Pond that are classified as prohibited or seasonally closed. Status of emergency closures and of the CONDITIONALLY APPROVED areas of Upper Narragansett Bay, Greenwich Bay, Mount Hope Bay, and the Kickemuit River may be obtained 24 hours a day by calling DEM's shell fishing hotline at 401-222-2900. [Shellfish area maps](#) are available on [DEM's website](#).

For information on DEM programs and services, visit [www.dem.ri.gov](http://www.dem.ri.gov). Follow DEM on Twitter (@RhodeIslandDEM) or Facebook at [www.facebook.com/RhodeIslandDEM](https://www.facebook.com/RhodeIslandDEM) for information DEM programs and services as well as other timely updates.

###

Telephone 401.222.4700 | [www.dem.ri.gov](http://www.dem.ri.gov) | Rhode Island Relay 711



## Rhode Island Department of Environmental Management

235 Promenade Street | Providence, RI 02908 | 401.222.4700 | [www.dem.ri.gov](http://www.dem.ri.gov) | @RhodeIslandDEM

### FOR IMMEDIATE RELEASE:

Friday, July 26, 2019

CONTACT: Mike Healey, DEM: 401-258-0787

[Michael.Healey@dem.ri.gov](mailto:Michael.Healey@dem.ri.gov)

Annemarie Beardsworth: 401-641-8726

[A.Beardsworth@health.ri.gov](mailto:A.Beardsworth@health.ri.gov)

## DEM, RIDOH ANNOUNCE IMMEDIATE CLOSURE OF WINNAPAug POND TO SHELLFISHING DUE TO HIGH BACTERIAL COUNT

*The agencies also advise that any shellfish harvested from the pond since Tuesday, July 23, be thrown away.*

PROVIDENCE – The Department of Environmental Management (DEM) and Rhode Island Department of Health (RIDOH) are announcing that effective immediately, all waters of Winnapaug Pond in Charlestown and Westerly are closed to shellfishing until further notice.

The agencies are enacting the closure because water samples collected on Wednesday, July 24, had unsafe bacteria levels. The results of these samples were received late today. The high bacteria levels are likely due to stormwater runoff from the more than three inches of rain that fell on Monday, July 22, and Tuesday, July 23, across the state. RIDOH has initiated a recall of shellfish commercially harvested (wild or farmed) from Winnapaug Pond on or after Tuesday and is advising that any shellfish harvested recreationally be thrown away immediately.

Shellfish from water with high bacteria levels could result in gastroenteritis, RIDOH advises. The symptoms of gastroenteritis could include nausea, vomiting, stomachache, diarrhea, headache, and fever. It can be a serious health concern for young children, the elderly, and people with compromised immune systems.

DEM is planning to collect additional water samples on Monday and will update this announcement as circumstances warrant.

Follow DEM on Twitter ([@RhodeIslandDEM](https://twitter.com/RhodeIslandDEM)) or [Facebook](#) and follow RIDOH on Twitter ([@RIHEALTH](https://twitter.com/RIHEALTH)) or [Facebook](#) for information and timely updates.

###

RI-6P Harvests 07-23-2019

West - Cedar Island Oyster Farm - RI-6P - 7200 oysters harvested - Harvest Time 0830 AM

07-23-2019 Shipping Day

MA Pangea Shellfish received 1000 oysters on 07-24-2019 - 1000 were collected & destroyed - 0 consumed

PA Samuels & Son received 1000 oysters on 07-24-2019 - 900 were collected & destroyed - 100 consumed

IL Fortune Fish received 1000 oysters on 07-26-2019 - 776 were collected & destroyed - 224 consumed

MA Foley Fish, New Bedford received 600 on 07-24-2019 - 300 were collected & destroyed - 300 consumed

NY Greenpoint Fish received 1000 oysters on 07-24-2019 - 305 were collected & destroyed - 695 consumed

CT Sea Well Sfd received 900 oysters on 07-24-2019 - waiting for totals

NY Righteous Foods received 500 oysters on 07-24-2019 - 200 were collected & destroyed - 400 consumed

MA Cape Cod Shellfish received 600 oysters on 07-24-2019 - 200 were collected & destroyed - 400 consumed

07-24-2019 Shipping Day

NY Aquagrill received 200 oysters 07-25-2019 - 200 were collected & destroyed - 0 consumed

FL G&B Oyster received 200 oysters 07-25-2019 - 125 were collected & destroyed - 75 consumed

GA Kimball House received 100 oysters 07-25-2019 - 100 were collected & destroyed - 0 consumed

TOTALS - shipped 7200 = collected & destroyed + consumed.